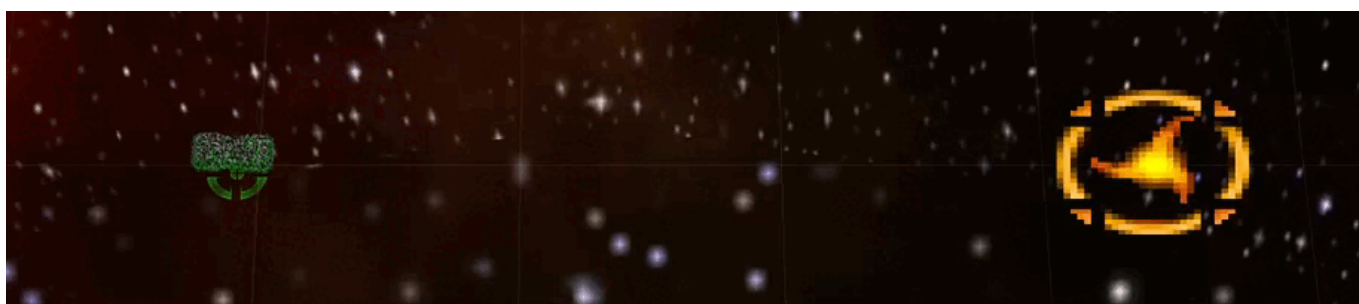


# Armada 1 Transwarp Drive

The *Transwarp Drive* is a special weapon of the game [Star Trek: Armada](#). It allows a ship to teleport itself anywhere on the map (provided the ship could exist at that spot at all) instantaneously. It is researched at the [Modification Center](#). It is not to be confused with the similar [Transwarp Gate](#). Interestingly, the *Transwarp Drive* is the only tier 1 special weapon the Borg AI will no research in [multi-player](#) matches.

There are claims out there, that using the *Transwarp Drive* increases chances of de-syncs. This might possibly be the cause why the AI was set to never use it. It is however still untested, if this effect on de-sync probability is true.

The *Transwarp Drive* being used looks like this:



Property	Value
Range	20'000
Build Time	50 s
Supply Cost	10 (12/min)
Dilithium Cost	250 (5.0/s)
Special Energy Cost	1000

[ [Star Trek: Armada](#) ] [ [Game Play](#) ] [ [Technical Support](#) ]

[ [Units](#) ] [ [Hero Ships](#) ] [ [Campaign Ships](#) ] [ [Ship Types](#) ] [ [Stations](#) ] [ [Station Types](#) ] [ [Special Weapons](#) ] [ [Factions](#) ] [ [Modding](#) ]

[ [Back to the Games Database](#) ]

From: <https://mwohlauer.d-n-s.name/wiki/> - [mwohlauer.d-n-s.name](https://mwohlauer.d-n-s.name/) / [www.mobile-infanterie.de](http://www.mobile-infanterie.de)

Permanent link: [https://mwohlauer.d-n-s.name/wiki/doku.php?id=en:games:star\\_trek\\_armada\\_1:transwarp\\_drive&rev=1705896072](https://mwohlauer.d-n-s.name/wiki/doku.php?id=en:games:star_trek_armada_1:transwarp_drive&rev=1705896072)

Last update: 2024-01-22-04-01

