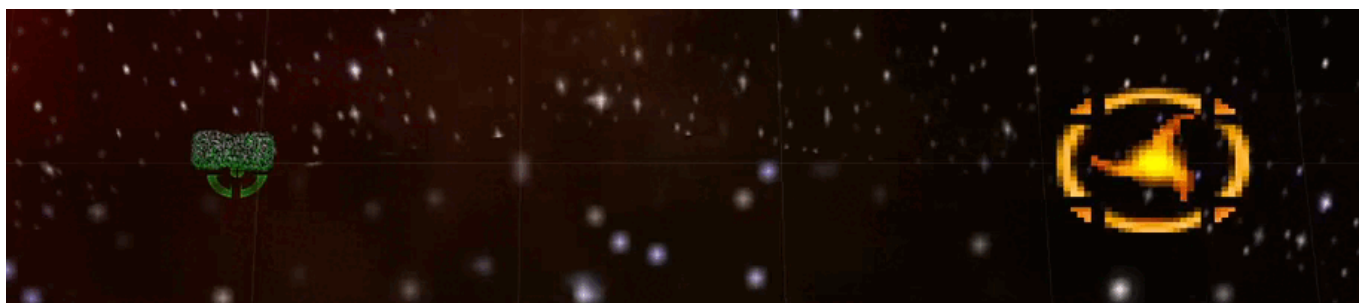


# Armada 1 Transwarp Drive

The Transwarp Drive is a special weapon of the game [Star Trek: Armada](#). It allows a ship to teleport itself anywhere on the map (provided the ship could exist at that spot at all) instantaneously. It is researched at the [Modification Center](#). It is not to be confused with the similar [Transwarp Gate](#). Interestingly, the Transwarp Drive is the only tier 1 special weapon the Borg AI will no research in [multi-player](#) matches. The Transwarp Drive being used looks like this:



| Property            | Value       |
|---------------------|-------------|
| Range               | 20'000      |
| Build Time          | 50 s        |
| Supply Cost         | 10 (12/min) |
| Dilithium Cost      | 250 (5.0/s) |
| Special Energy Cost | 1000        |

[ [Star Trek: Armada](#) ] [ [Game Play](#) ] [ [Technical Support](#) ]

[ [Units](#) ] [ [Hero Ships](#) ] [ [Campaign Ships](#) ] [ [Ship Types](#) ] [ [Stations](#) ] [ [Station Types](#) ] [ [Special Weapons](#) ] [ [Factions](#) ] [ [Modding](#) ]

[ [Back to the Games Database](#) ]

From: <https://mwohlauer.d-n-s.name/wiki/> - [mwohlauer.d-n-s.name](http://mwohlauer.d-n-s.name) / [www.mobile-infanterie.de](http://www.mobile-infanterie.de)

Permanent link: [https://mwohlauer.d-n-s.name/wiki/doku.php?id=en:games:star\\_trek\\_armada\\_1:transwarp\\_drive&rev=1701606323](https://mwohlauer.d-n-s.name/wiki/doku.php?id=en:games:star_trek_armada_1:transwarp_drive&rev=1701606323)

Last update: **2023-12-03-12-25**

