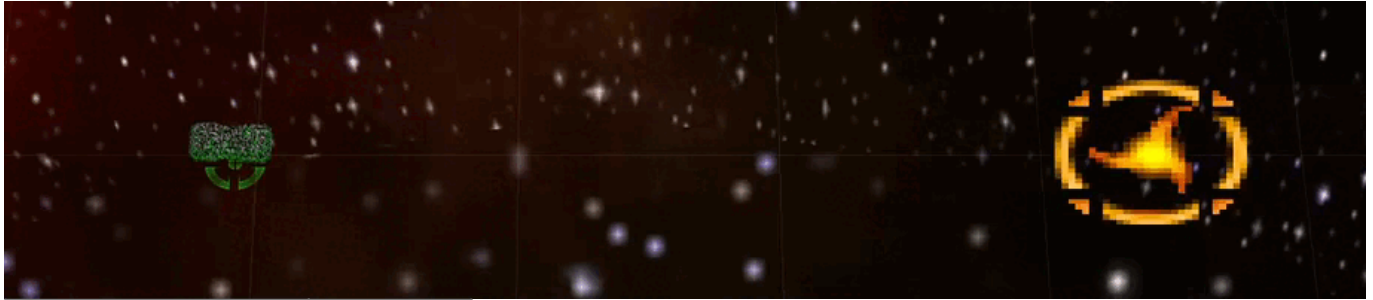


# Armada 1 Transwarp Drive

The Transwarp Drive is a special weapon of the game [Star Trek: Armada](#). It allows a ship to teleport itself anywhere on the map (provided the ship could exist at that spot at all) instantaneously. It is researched at the [Modification Center](#). It is not to be confused with the similar [Transwarp Gate](#). The Transwarp Drive being used looks like this:



Property	Value
<b>Range</b>	20'000
<b>Build Time</b>	50 s
<b>Supply Cost</b>	10 (12/min)
<b>Dilithium Cost</b>	250 (5.0/s)
<b>Special Energy Cost</b>	1000

[ [Star Trek: Armada](#) ] [ [Game Play](#) ] [ [Technical Support](#) ]

[ [Units](#) ] [ [Hero Ships](#) ] [ [Campaign Ships](#) ] [ [Ship Types](#) ] [ [Stations](#) ] [ [Station Types](#) ] [ [Special Weapons](#) ] [ [Factions](#) ] [ [Modding](#) ]

[ [Back to the Games Database](#) ]

From:

<https://mwohlauer.d-n-s.name/wiki/> - [mwohlauer.d-n-s.name](https://mwohlauer.d-n-s.name/) / [www.mobile-infanterie.de](http://www.mobile-infanterie.de)

Permanent link:

[https://mwohlauer.d-n-s.name/wiki/doku.php?id=en:games:star\\_trek\\_armada\\_1:transwarp\\_drive&rev=1648835843](https://mwohlauer.d-n-s.name/wiki/doku.php?id=en:games:star_trek_armada_1:transwarp_drive&rev=1648835843)

Last update: **2022-04-01-17-57**

