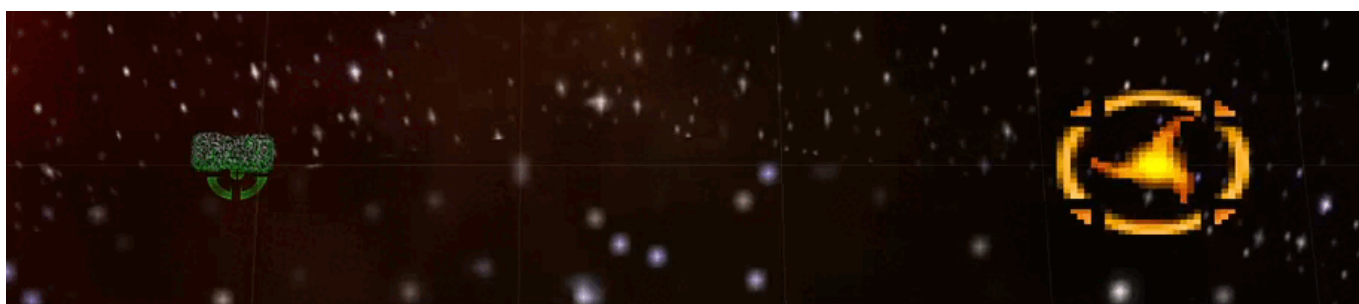


Armada 1 Transwarp Drive

The *Transwarp Drive* is a special weapon of the game [Star Trek: Armada](#). It allows a ship to teleport itself anywhere on the map (provided the ship could exist at that spot at all) instantaneously. It is researched at the [Modification Center](#). It is not to be confused with the similar [Transwarp Gate](#). Interestingly, the *Transwarp Drive* is the only tier 1 special weapon the Borg AI will not research in [multi-player](#) matches.

There are claims out there, that using the *Transwarp Drive* increases chances of de-syncs. This might possibly be the cause why the AI was set to never use it. It is however still untested, if this effect on de-sync probability is true.

The *Transwarp Drive* being used looks like this:



Property	Value
Range	20'000
Build Time	50 s
Supply Cost	10 (12/min)
Dilithium Cost	250 (5.0/s)
Special Energy Cost	1000

[[Star Trek: Armada](#)] [[Game Play](#)] [[Technical Support](#)]

[[Units](#)] [[Hero Ships](#)] [[Campaign Ships](#)] [[Ship Types](#)] [[Stations](#)] [[Station Types](#)] [[Special Weapons](#)] [[Factions](#)] [[Modding](#)]

[[Back to the Games Database](#)]

From:

<https://mwohlauer.d-n-s.name/wiki/> - mwohlauer.d-n-s.name / www.mobile-infanterie.de

Permanent link:

https://mwohlauer.d-n-s.name/wiki/doku.php?id=en:games:star_trek_armada_1:transwarp_drive

Last update: **2024-01-22-04-02**

