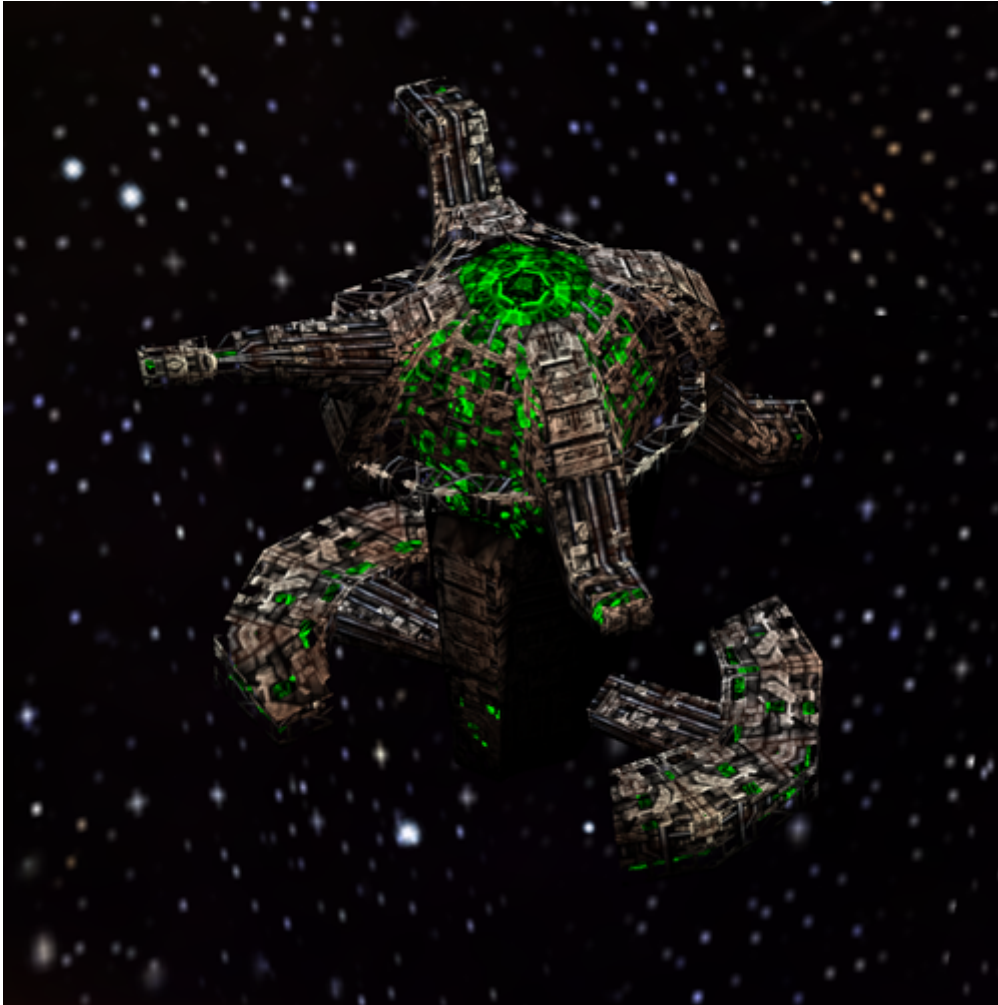


Armada 1 Technology Node



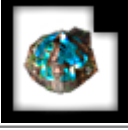

The Technology Node provides the [special weapons](#) research of the [Borg](#) for their [caster](#) ship, the [Diamond](#). As such it is a must-have when using the Diamond. This station is not available when no special weapons are active for the match.



Statistical Values

Faction	Borg
Dilithium Cost	900 (10/s)
Build Time	90 s
Crew Cost	200 (2.2/s)
Supply Cost	20 (13.3/min)
Shield Energy	3000
Shield Restoration Rate	2.5/s
Weapon System	none
Effective Damage Rate	0
Scanning Range	700
Special Weapon	none

Resource Drain When Used

Research Item	Icon	Dilithium	Supply
Nanites		5/s	4.3/min
Ultritium Burst		5/s	4.3/min
Shield Remodulation		5/s	4.3/min
Computer Override		5/s	4.3/min

[[Star Trek: Armada](#)] [[Game Play](#)] [[Technical Support](#)]

[[Units](#)] [[Hero Ships](#)] [[Campaign Ships](#)] [[Ship Types](#)] [[Stations](#)] [[Station Types](#)] [[Special Weapons](#)] [[Factions](#)] [[Modding](#)]

[[Back to the Games Database](#)]

From: <https://mwohlauer.d-n-s.name/wiki/> - mwohlauer.d-n-s.name / www.mobile-infanterie.de

Permanent link: https://mwohlauer.d-n-s.name/wiki/doku.php?id=en:games:star_trek_armada_1:technology_node

Last update: **2022-04-01-18-00**

