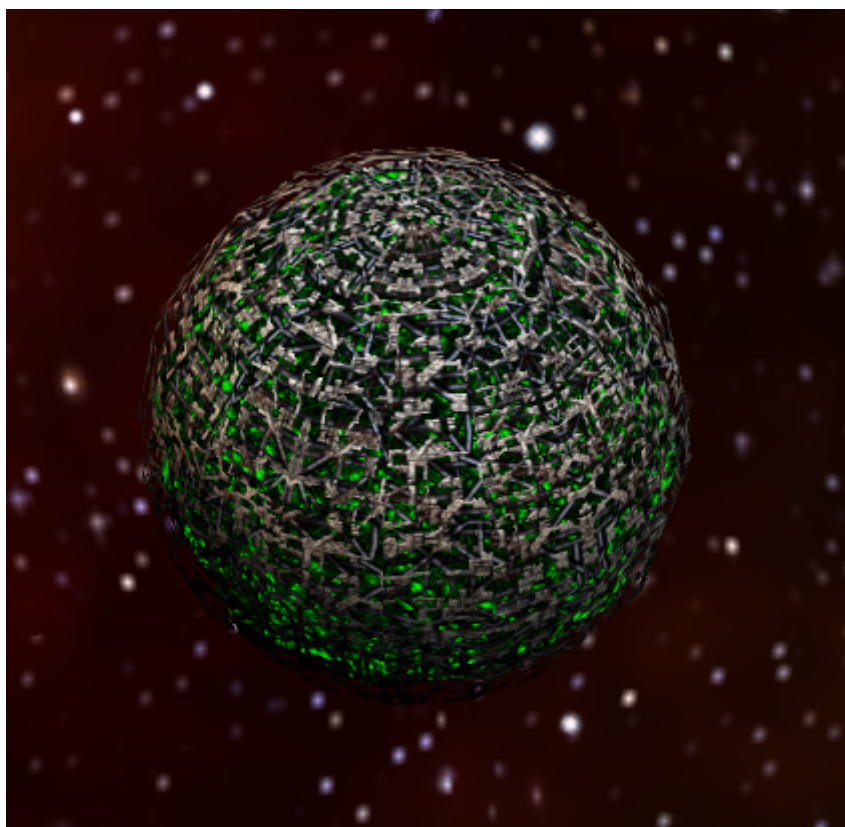


Armada 1 Sphere

The *Sphere* type ship of the game Star Trek Armada is the Borg's lighter [cruiser](#). It is build by the [Assembly Matrix](#). The supply drain is lower than for the other cruisers (6/min). It is a little bit more expensive on the crew side (250) but it's special weapon allows it to recharge its shields from 0 to 100 percent with one full special weapon energy charge. This adds to its Borg typical high shield recharge rate (2.81/s) which is the highest amongst cruisers. These two aspects make it effectively have 750 shields, comparable to a [constructor](#) or [battleship](#) in terms of resilience, with an effective recharge rate of 4,7/s (higher than that of a [Federation Sovereign class](#) ship). This makes it an excellent, sturdy attack vessel.



Faction	Borg
Role	Cruiser
Build Time	50 s
Dilithium Cost	500 (10/s)
Supply Cost	5 (6/min)
Crew Cost	250 (5/s)
Shields	375
Shield Recharge Rate	2.81/s
Conventional Weapon Systems	Energy Beam X1
Effective Damage Rate	15/s
Max Special Weapon Energy	1000
Special Weapon Energy Recharge Rate	10/s
Special Abilities	Regeneration
Speed	80
Scanning Range	500

Possesses Cloak	no
------------------------	----

[[Star Trek: Armada](#)] [[Game Play](#)] [[Technical Support](#)]

[[Units](#)] [[Hero Ships](#)] [[Campaign Ships](#)] [[Ship Types](#)] [[Stations](#)] [[Station Types](#)] [[Special Weapons](#)] [[Factions](#)] [[Modding](#)]

[[Back to the Games Database](#)]

From:

<https://mwohlauer.d-n-s.name/wiki/> - **mwohlauer.d-n-s.name** / **www.mobile-infanterie.de**

Permanent link:

https://mwohlauer.d-n-s.name/wiki/doku.php?id=en:games:star_trek_armada_1:sphere&rev=1648835844

Last update: **2022-04-01-17-57**

