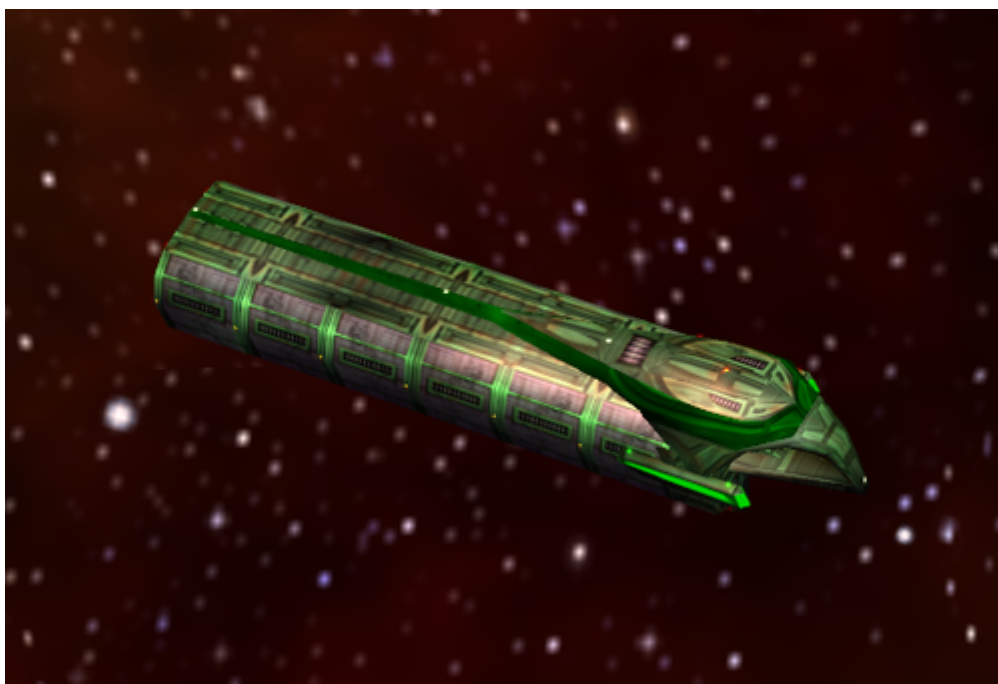


Armada 1 Romulan Construction Ship

The *Romulan Construction Ship* type ship of the game *Star Trek Armada* is the Romulans [construction ship](#). It is built by the [Starbase](#). As such it has pretty much the same stats as any other constructor, aside from the traits given by its crew's faction. The [Tractor Beam](#) can be used to tow damaged or vacated ships. All buildings of the Romulans are built with the Construction Ship. This ship is sturdy but unarmed, making it an easy target, if not escorted or covered by any defense.



Faction	Romulans
Role	Constructor
Build Time	50 s
Dilithium Cost	500 (10/s)
Supply Cost	2 (2.4/min)
Crew Cost	500 (10/s)
Shields	700
Shield Recharge Rate	3.5/s
Conventional Weapon Systems	none
Effective Damage Rate	0
Max Special Weapon Energy	0
Special Weapon Energy Recharge Rate	0
Special Abilities	Tractor Beam
Speed	50
Scanning Range	500
Possesses Cloak	no

[[Star Trek: Armada](#)] [[Game Play](#)] [[Technical Support](#)]

[[Units](#)] [[Hero Ships](#)] [[Campaign Ships](#)] [[Ship Types](#)] [[Stations](#)] [[Station Types](#)] [[Special](#)

[Weapons](#)] [[Factions](#)] [[Modding](#)]

[[Back to the Games Database](#)]

From:

<https://mwohlauer.d-n-s.name/wiki/> - mwohlauer.d-n-s.name / www.mobile-infanterie.de

Permanent link:

https://mwohlauer.d-n-s.name/wiki/doku.php?id=en:games:star_trek_armada_1:romulan_construction_ship

Last update: **2022-04-10-15-39**

