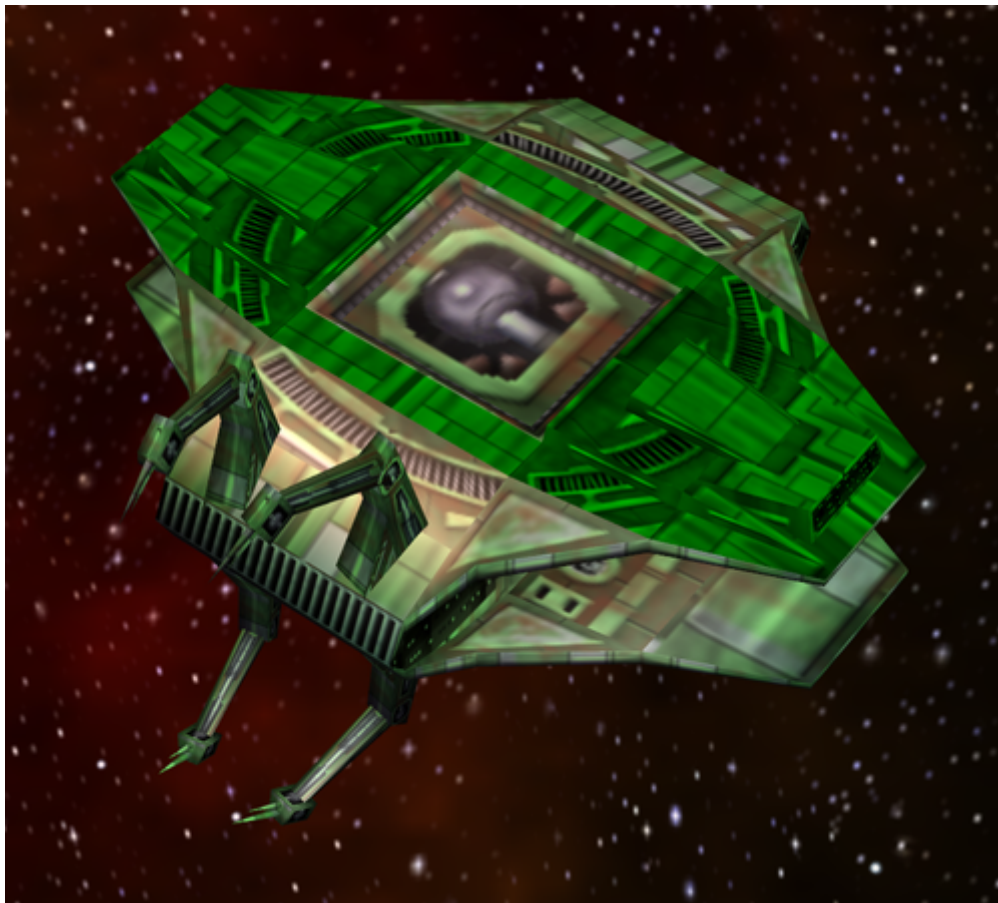


# Armada 1 Romulan Advanced Shipyard



The Advanced Shipyard produces the [Romulan caster](#) and battleship, the [Shadow class](#) and the [Warbird](#). Both are formidable foes. When playing without [special weapons](#), the Shadow is not available at all.



## Statistical Values

<b>Faction</b>	<a href="#">Romulan</a>
<b>Dilithium Cost</b>	2000 (20/s)
<b>Build Time</b>	100 s
<b>Crew Cost</b>	500 (5/s)
<b>Supply Cost</b>	5 (3/min)
<b>Shield Energy</b>	2500
<b>Shield Restoration Rate</b>	2.1/s
<b>Weapon System</b>	none
<b>Effective Damage Rate</b>	0
<b>Scanning Range</b>	700
<b>Special Weapon</b>	none

## Resource Drain When Used

Ship	Icon	Dilithium	Supply	Crew
Shadow		10/s	5.7/min	2.9/s
D'Deridex		10/s	5.3/min	5/s

[ [Star Trek: Armada](#) ] [ [Game Play](#) ] [ [Technical Support](#) ]

[ [Units](#) ] [ [Hero Ships](#) ] [ [Campaign Ships](#) ] [ [Ship Types](#) ] [ [Stations](#) ] [ [Station Types](#) ] [ [Special Weapons](#) ] [ [Factions](#) ] [ [Modding](#) ]

[ [Back to the Games Database](#) ]

From: <https://mwohlauer.d-n-s.name/wiki/> - [mwohlauer.d-n-s.name](https://mwohlauer.d-n-s.name/) / [www.mobile-infanterie.de](https://www.mobile-infanterie.de)

Permanent link: [https://mwohlauer.d-n-s.name/wiki/doku.php?id=en:games:star\\_trek\\_armada\\_1:romulan\\_advanced\\_shipyard&rev=1648845592](https://mwohlauer.d-n-s.name/wiki/doku.php?id=en:games:star_trek_armada_1:romulan_advanced_shipyard&rev=1648845592)

Last update: 2022-04-01-20-39

