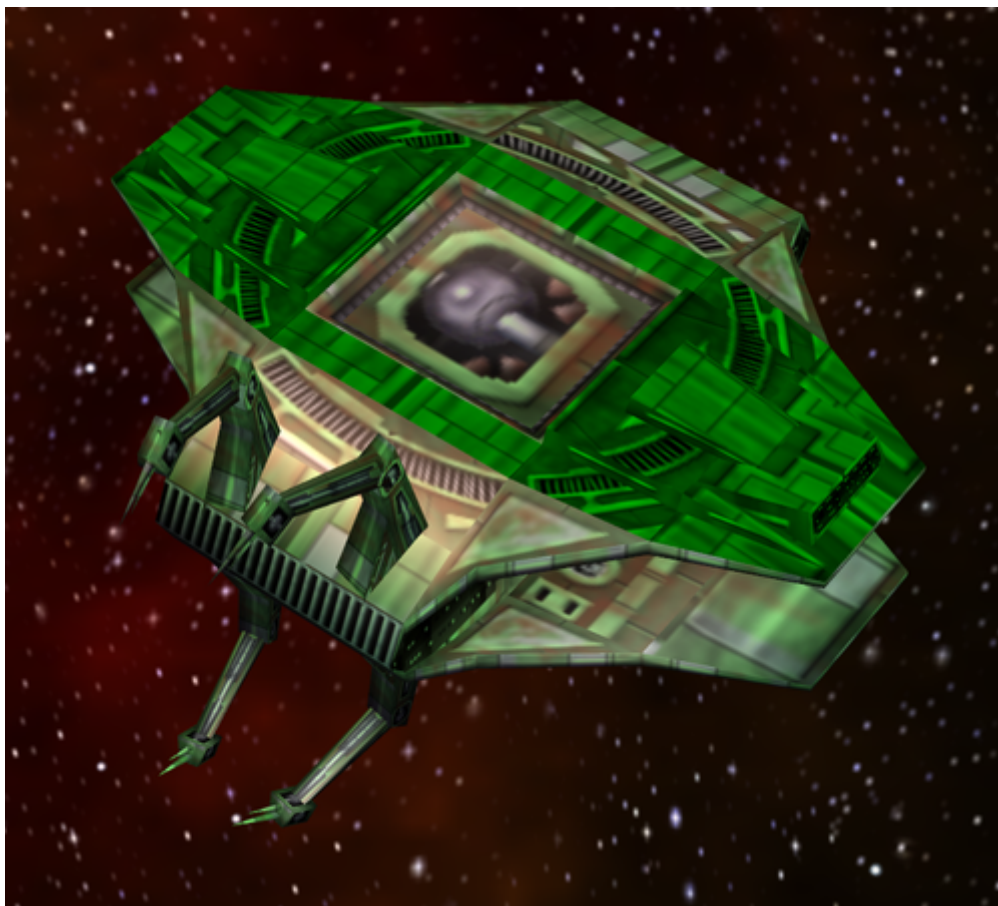


Armada 1 Romulan Advanced Shipyard



The Advanced Shipyard produces the [Romulan caster](#) and battleship, the [Shadow class](#) and the [Warbird](#). Both are formidable foes. When playing without [special weapons](#), the Shadow is not available at all.



Statistical Values

Faction	Romulan
Dilithium Cost	2000 (20/s)
Build Time	100 s
Crew Cost	500 (5/s)
Supply Cost	5 (3/min)
Shield Energy	2500
Shield Restoration Rate	2.1/s
Weapon System	none
Effective Damage Rate	0
Scanning Range	700
Special Weapon	none

Resource Drain When Used

Ship	Icon	Dilithium	Supply	Crew
Shadow		10/s	5.7/min	2.9/s
D'Deridex		10/s	5.3/min	5/s

[[Star Trek: Armada](#)] [[Game Play](#)] [[Technical Support](#)]

[[Units](#)] [[Hero Ships](#)] [[Campaign Ships](#)] [[Ship Types](#)] [[Stations](#)] [[Station Types](#)] [[Special Weapons](#)] [[Factions](#)] [[Modding](#)]

[[Back to the Games Database](#)]

From:

<https://www.mobile-infanterie.de/wiki/> - [mwohlauer.d-n-s.name](#) / www.mobile-infanterie.de

Permanent link:

https://www.mobile-infanterie.de/wiki/doku.php?id=en:games:star_trek_armada_1:romulan_advanced_shipyard

Last update: **2022-04-02-10-10**

