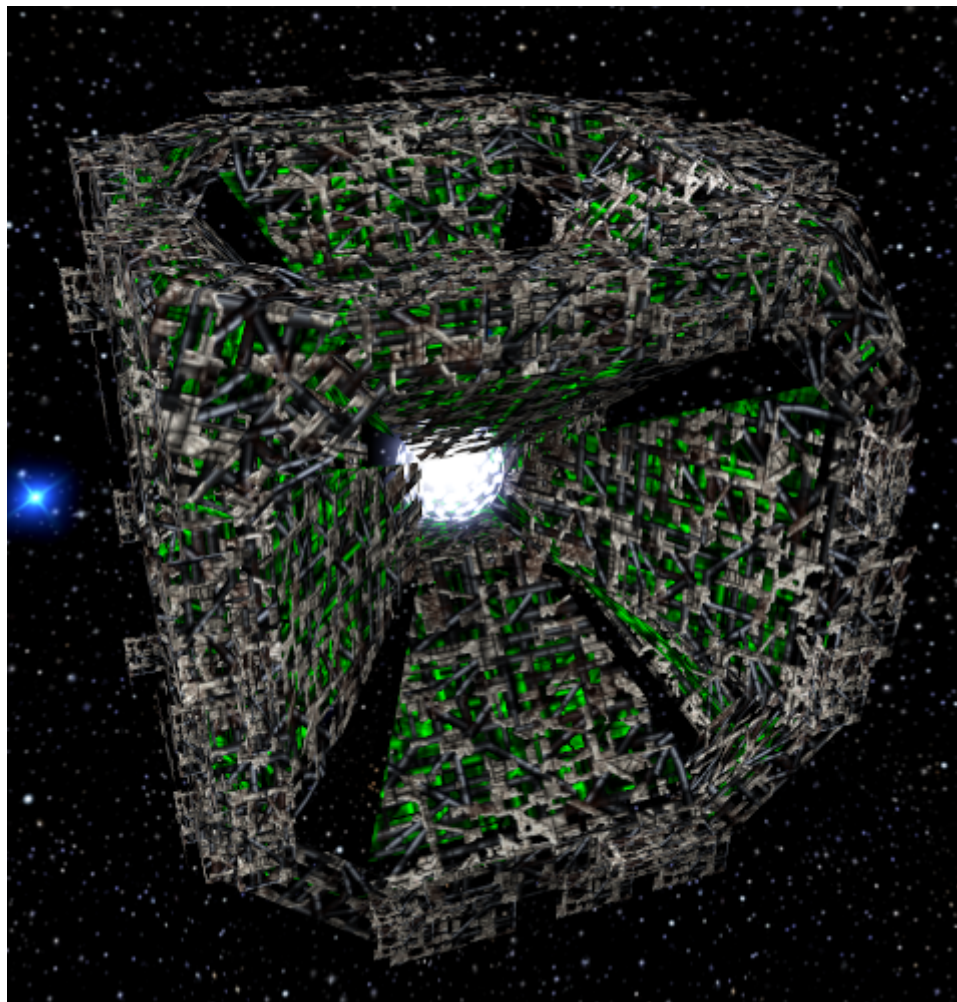


# Armada 1 Omega Containment Facility

The Omega Containment Facility is a special building of the [Borg](#). It produces nothing and cannot be built. It is only part of single-player campaign missions and may be part of custom maps.



## Statistical Values

<b>Faction</b>	<a href="#">Borg</a>
<b>Dilithium Cost</b>	1000 (33,3/s)
<b>Build Time</b>	30 s
<b>Crew Cost</b>	8000 (266.7/s)
<b>Supply Cost</b>	7 (14/min)
<b>Shield Energy</b>	4000
<b>Shield Restoration Rate</b>	3.3/s
<b>Weapon System</b>	-
<b>Effective Damage Rate</b>	0
<b>Scanning Range</b>	700

[ [Star Trek: Armada](#) ] [ [Game Play](#) ] [ [Technical Support](#) ]

[ [Units](#) ] [ [Hero Ships](#) ] [ [Campaign Ships](#) ] [ [Ship Types](#) ] [ [Stations](#) ] [ [Station Types](#) ] [ [Special Weapons](#) ] [ [Factions](#) ] [ [Modding](#) ]

---

[ [Back to the Games Database](#) ]

From:

<https://mwohlauer.d-n-s.name/wiki/> - [mwohlauer.d-n-s.name](https://mwohlauer.d-n-s.name/) / [www.mobile-infanterie.de](https://www.mobile-infanterie.de)

Permanent link:

[https://mwohlauer.d-n-s.name/wiki/doku.php?id=en:games:star\\_trek\\_armada\\_1:omega\\_containment\\_facility&rev=1651396064](https://mwohlauer.d-n-s.name/wiki/doku.php?id=en:games:star_trek_armada_1:omega_containment_facility&rev=1651396064)

Last update: **2022-05-01-09-07**

