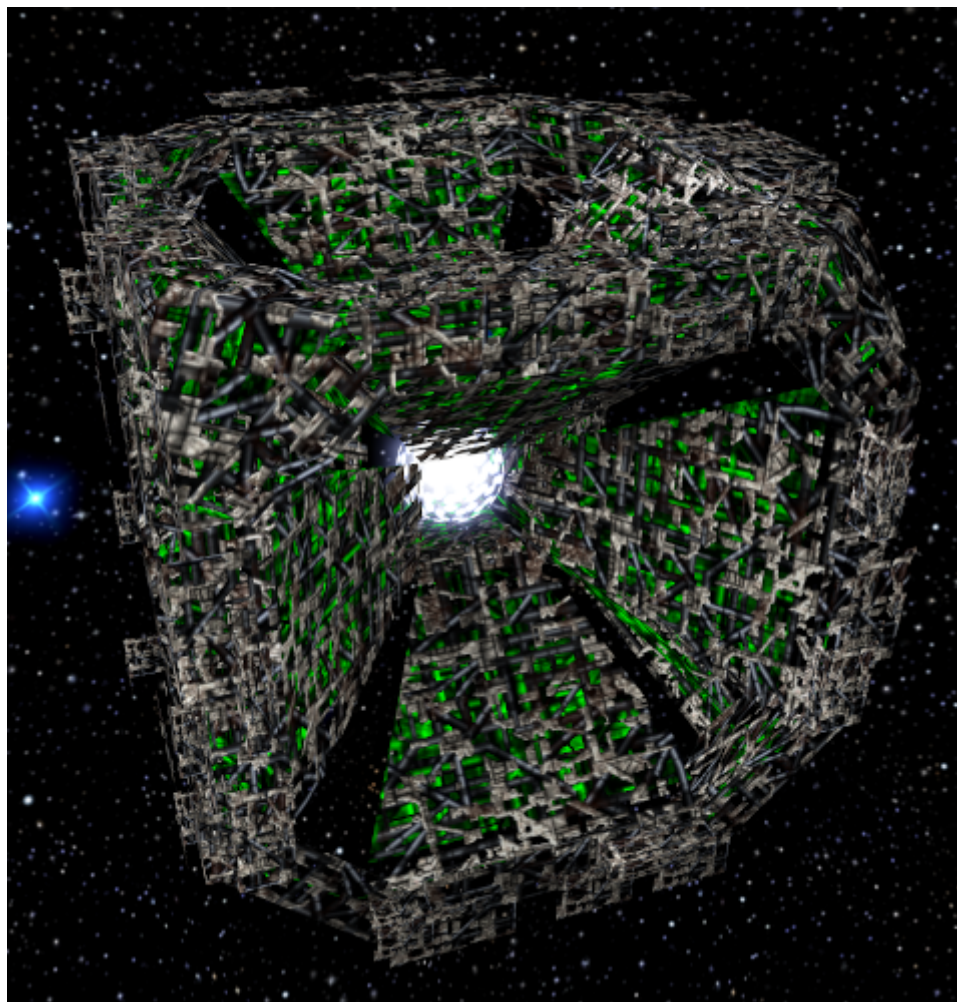


Armada 1 Omega Containment Facility

The Omega Containment Facility is a special building of the [Borg](#). It produces nothing and cannot be built in any way as there is no construction unit for this faction. It is only part of single-player campaign missions and may be part of custom maps.



Statistical Values

Faction	Borg
Dilithium Cost	1000 (33,3/s)
Build Time	30 s
Crew Cost	8000 (266.7/s)
Supply Cost	7 (14/min)
Shield Energy	4000
Shield Restoration Rate	3.3/s
Weapon System	-
Effective Damage Rate	0
Scanning Range	700

[[Star Trek: Armada](#)] [[Game Play](#)] [[Technical Support](#)]

[[Units](#)] [[Hero Ships](#)] [[Campaign Ships](#)] [[Ship Types](#)] [[Stations](#)] [[Station Types](#)] [[Special Weapons](#)] [[Factions](#)] [[Modding](#)]

[[Back to the Games Database](#)]

From:
<https://mwohlauer.d-n-s.name/wiki/> - mwohlauer.d-n-s.name / www.mobile-infanterie.de

Permanent link:
https://mwohlauer.d-n-s.name/wiki/doku.php?id=en:games:star_trek_armada_1:omega_containment_facility&rev=1651396040

Last update: **2022-05-01-09-07**

