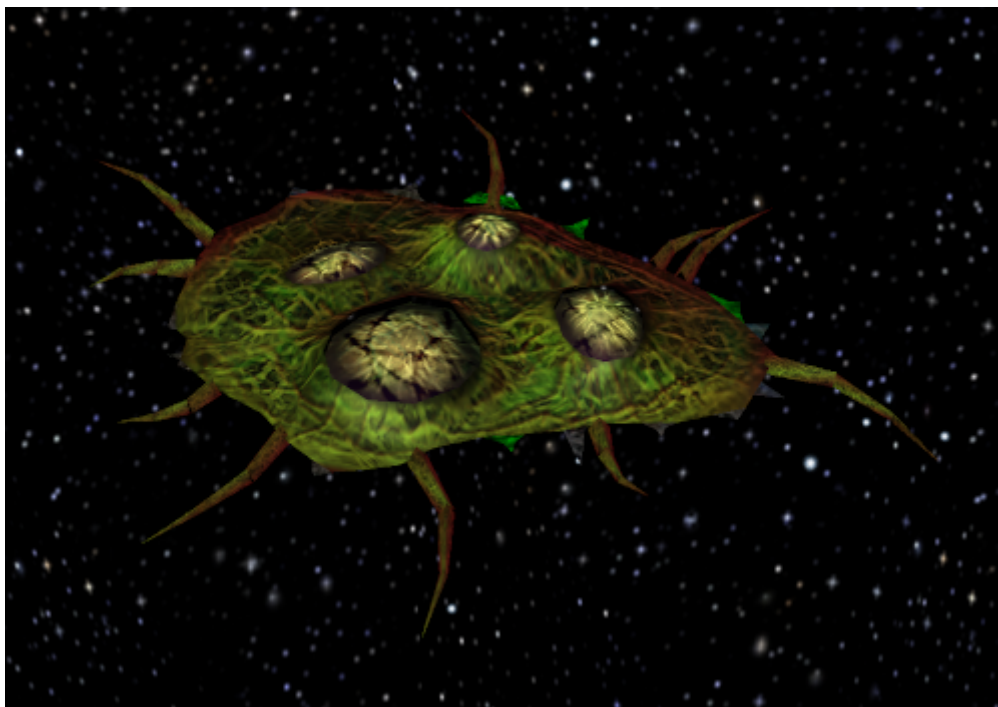


Armada 1 Mother Entity

The Mother Entity is [Species 9341](#)'s pendant of a [Starbase](#) and a [Ship Yard](#). It produces [Entities](#) on a very high rate. It has no other defensive properties, although this was probably never the intention (see the [campaign bug in the Extermination mission](#) on the matter).



Statistical Values

Faction	Species 9341
Dilithium Cost	800 (10/s)
Build Time	80 s
Crew Cost	0
Supply Cost/Gain	0
Shield Energy	1000
Shield Restoration Rate	5/s
Weapon System	-
Effective Damage Rate	-
Scanning Range	500

Production Capabilities

Item	Dilithium	Supply	Crew
Entity	2/s	0	0

[[Star Trek: Armada](#)] [[Game Play](#)] [[Technical Support](#)]

[[Units](#)] [[Hero Ships](#)] [[Campaign Ships](#)] [[Ship Types](#)] [[Stations](#)] [[Station Types](#)] [[Special](#)

[Weapons](#)] [[Factions](#)] [[Modding](#)]

[[Back to the Games Database](#)]

From:

<https://mwohlauer.d-n-s.name/wiki/> - **mwohlauer.d-n-s.name** / **www.mobile-infanterie.de**

Permanent link:

https://mwohlauer.d-n-s.name/wiki/doku.php?id=en:games:star_trek_armada_1:mother_entity&rev=1651394679

Last update: **2022-05-01-08-44**

