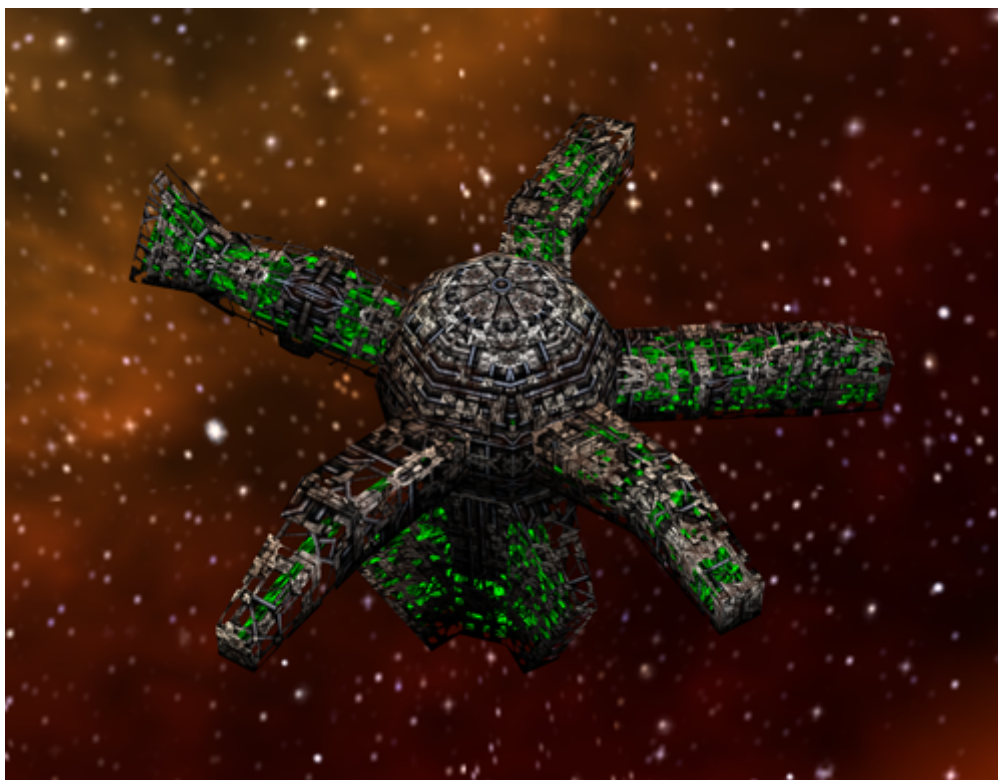


Armada 1 Modification Center

The Modification Center provides the [special weapons](#) research for the [Borg](#) conventional ships, the [Detector](#), [Interceptor](#), [Sphere](#), [Assimilator](#) and [Cube](#). The [Holding Beam](#) is only available, once the [Adv. Assembly Matrix](#) is built. It is strongly recommended for augmenting your fleet. This station is not available when no special weapons are active for the match.



Statistical Values

Faction	Borg
Dilithium Cost	1300 (20/s)
Build Time	65 s
Crew Cost	300 (4.6/s)
Supply Cost	20 (18.5/min)
Shield Energy	3000
Shield Restoration Rate	2.5/s
Weapon System	none
Effective Damage Rate	0
Scanning Range	700
Special Weapon	none

Resource Drain When Used

Research Item	Icon	Dilithium	Supply
Tachyon Detection Grid		5/s	25/min
Transwarp Drive		5/s	12/min
Regeneration		5/s	6/min
Auto-Assimilator		5/s	6/min
Holding Beam		5/s	2.5/min

[[Star Trek: Armada](#)] [[Game Play](#)] [[Technical Support](#)]

[[Units](#)] [[Hero Ships](#)] [[Campaign Ships](#)] [[Ship Types](#)] [[Stations](#)] [[Station Types](#)] [[Special Weapons](#)] [[Factions](#)] [[Modding](#)]

[[Back to the Games Database](#)]

From: <https://mwohlauer.d-n-s.name/wiki/> - mwohlauer.d-n-s.name / www.mobile-infanterie.de

Permanent link: https://mwohlauer.d-n-s.name/wiki/doku.php?id=en:games:star_trek_armada_1:modification_center&rev=1648836008

Last update: **2022-04-01-18-00**

