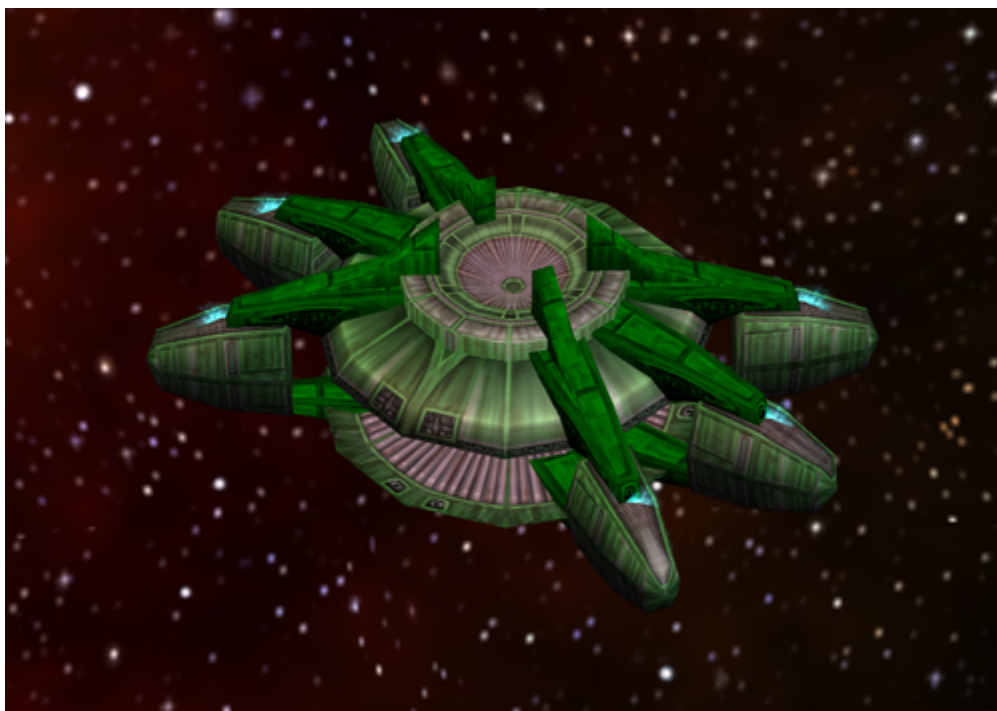


# Armada 1 Mining Facility

The Mining Facility is the target station for [Dilithium Freighters](#). After gathering Dilithium from a [Dilithium Moon](#) the Dilithium is transported back to the Mining Facility. It is a vital part of the economy of any [Romulan](#) player. The least number of Freighters required to achieve maximum output is three. Depending on the relative position of station and moon it may require more freighters.



## Statistical Values

<b>Faction</b>	<a href="#">Romulan</a>
<b>Dilithium Cost</b>	1000 (20/s)
<b>Build Time</b>	50 s
<b>Crew Cost</b>	150 - 250 (5/s)
<b>Supply Cost</b>	4 (4.8/min)
<b>Shield Energy</b>	2400
<b>Shield Restoration Rate</b>	2.0/s
<b>Weapon System</b>	none
<b>Effective Damage Rate</b>	0
<b>Scanning Range</b>	700

---

[ [Star Trek: Armada](#) ] [ [Game Play](#) ] [ [Technical Support](#) ]

[ [Units](#) ] [ [Hero Ships](#) ] [ [Campaign Ships](#) ] [ [Ship Types](#) ] [ [Stations](#) ] [ [Station Types](#) ] [ [Special Weapons](#) ] [ [Factions](#) ] [ [Modding](#) ]

---

[ [Back to the Games Database](#) ]

From:

<https://mwohlauer.d-n-s.name/wiki/> - **mwohlauer.d-n-s.name** / **www.mobile-infanterie.de**

Permanent link:

[https://mwohlauer.d-n-s.name/wiki/doku.php?id=en:games:star\\_trek\\_armada\\_1:mining\\_facility](https://mwohlauer.d-n-s.name/wiki/doku.php?id=en:games:star_trek_armada_1:mining_facility)

Last update: **2022-04-02-10-08**

