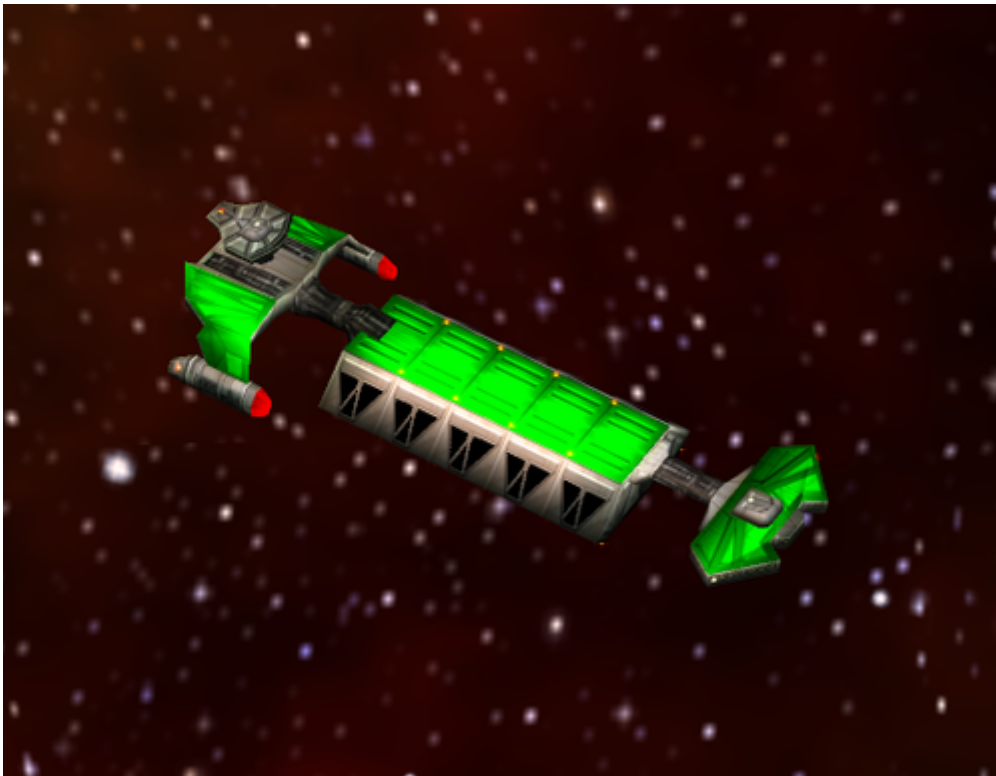


Armada 1 Klingon Dilithium Freighter

The *Klingon Dilithium Freighter* type ship of the game Star Trek Armada is the Klingons [mining freighter](#). It is build by the [Starbase](#). It is the main source for dilithium, one of the two primary resources. They are slowly moving and unarmed, only equipped with a [Mining Beam](#), allowing them to gather Dilithium from Dilithium moons. They are pretty much the same as the freighters of the other factions, only influenced by their crew's traits.



For using a [Dilithium Refinery](#) or other mining station to full capacity, you will need at least three of them (depending on the distance of station and moon). As these ships are relatively sturdy but defenseless you should avoid letting them be completely uncovered by defenses or ships nearby. They are vital for your economy.

Faction	Klingon
Role	Mining Freighter
Build Time	40 s
Dilithium Cost	400 (10/s)
Supply Cost	0
Crew Cost	100 (2.5/s)
Shields	500
Shield Recharge Rate	2.5/s
Conventional Weapon Systems	none
Effective Damage Rate	0
Max Special Weapon Energy	0
Special Weapon Energy Recharge Rate	0
Special Abilities	Mining Beam

Speed	50
Scanning Range	500
Possesses Cloak	no

[[Star Trek: Armada](#)] [[Game Play](#)] [[Technical Support](#)]

[[Units](#)] [[Hero Ships](#)] [[Campaign Ships](#)] [[Ship Types](#)] [[Stations](#)] [[Station Types](#)] [[Special Weapons](#)] [[Factions](#)] [[Modding](#)]

[[Back to the Games Database](#)]

From: <https://mwohlauer.d-n-s.name/wiki/> - mwohlauer.d-n-s.name / www.mobile-infanterie.de

Permanent link: https://mwohlauer.d-n-s.name/wiki/doku.php?id=en:games:star_trek_armada_1:klingon_dilithium_freighter

Last update: **2022-04-10-15-37**

