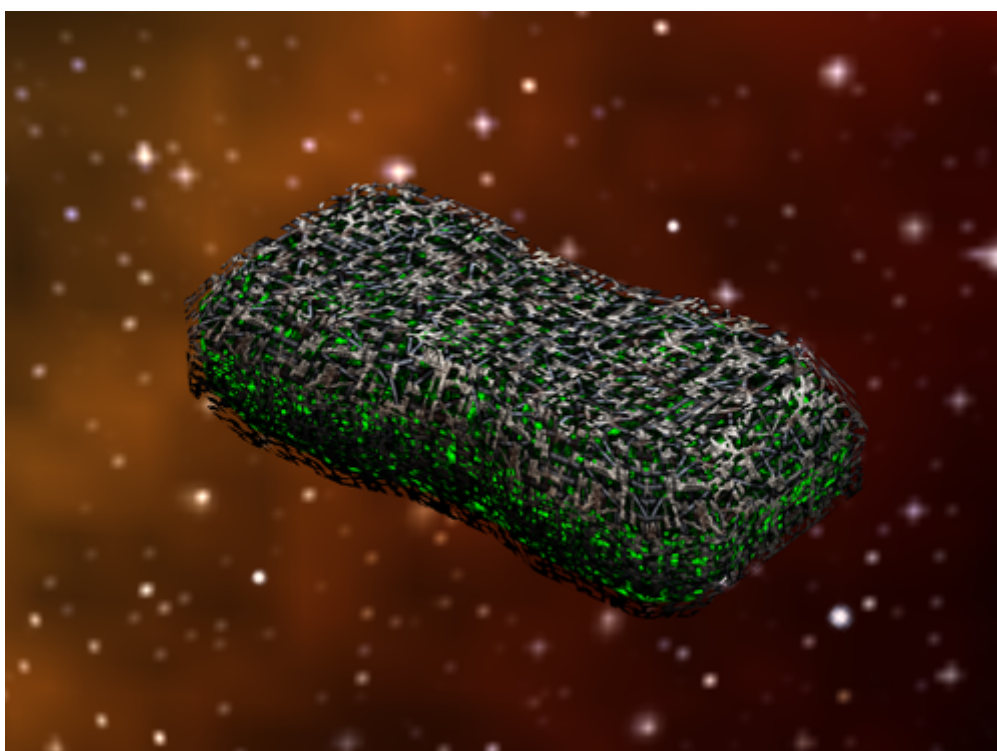


# Armada 1 Interceptor

The *Interceptor* type ship of the game Star Trek Armada is the Borg's [destroyer](#). It is build by the [Assembly Matrix](#). Its special weapon is the [Transwarp Drive](#), which allows it to traverse vast distances in an instance. This allows it to do hit and run attacks with little danger to itself. As such it is the destroyer that takes the longest to be build (30 s) and is the most expensive one (250 dilithium/100 crew). The supply, however is the lowest drain (6/min). It's shield recharge rate as well as the shield strength itself are the highest amongst destroyers (1.4/s and 188). Same goes for the effective damage rate of 8/s. This makes it a powerful early game unit and specifically useful for [harassment](#) tactics.



<b>Faction</b>	Borg
<b>Role</b>	<a href="#">Destroyer</a>
<b>Build Time</b>	30 s
<b>Dilithium Cost</b>	250 (8.3/s)
<b>Supply Cost</b>	3 (0.1/min)
<b>Crew Cost</b>	100 (3.3/s)
<b>Shields</b>	188
<b>Shield Recharge Rate</b>	1.4/s
<b>Conventional Weapon Systems</b>	Energy Beam X2
<b>Effective Damage Rate</b>	8/s
<b>Max Special Weapon Energy</b>	1000
<b>Special Weapon Energy Recharge Rate</b>	10/s
<b>Special Abilities</b>	<a href="#">Transwarp Drive</a>
<b>Speed</b>	100
<b>Scanning Range</b>	500
<b>Possesses Cloak</b>	no

[ [Star Trek: Armada](#) ] [ [Game Play](#) ] [ [Technical Support](#) ]

[ [Units](#) ] [ [Hero Ships](#) ] [ [Campaign Ships](#) ] [ [Ship Types](#) ] [ [Stations](#) ] [ [Station Types](#) ] [ [Special Weapons](#) ] [ [Factions](#) ] [ [Modding](#) ]

---

[ [Back to the Games Database](#) ]

From: <https://mwohlauer.d-n-s.name/wiki/> - [mwohlauer.d-n-s.name](https://mwohlauer.d-n-s.name/) / [www.mobile-infanterie.de](https://www.mobile-infanterie.de)

Permanent link: [https://mwohlauer.d-n-s.name/wiki/doku.php?id=en:games:star\\_trek\\_armada\\_1:interceptor&rev=1648888180](https://mwohlauer.d-n-s.name/wiki/doku.php?id=en:games:star_trek_armada_1:interceptor&rev=1648888180)

Last update: **2022-04-02-08-29**

