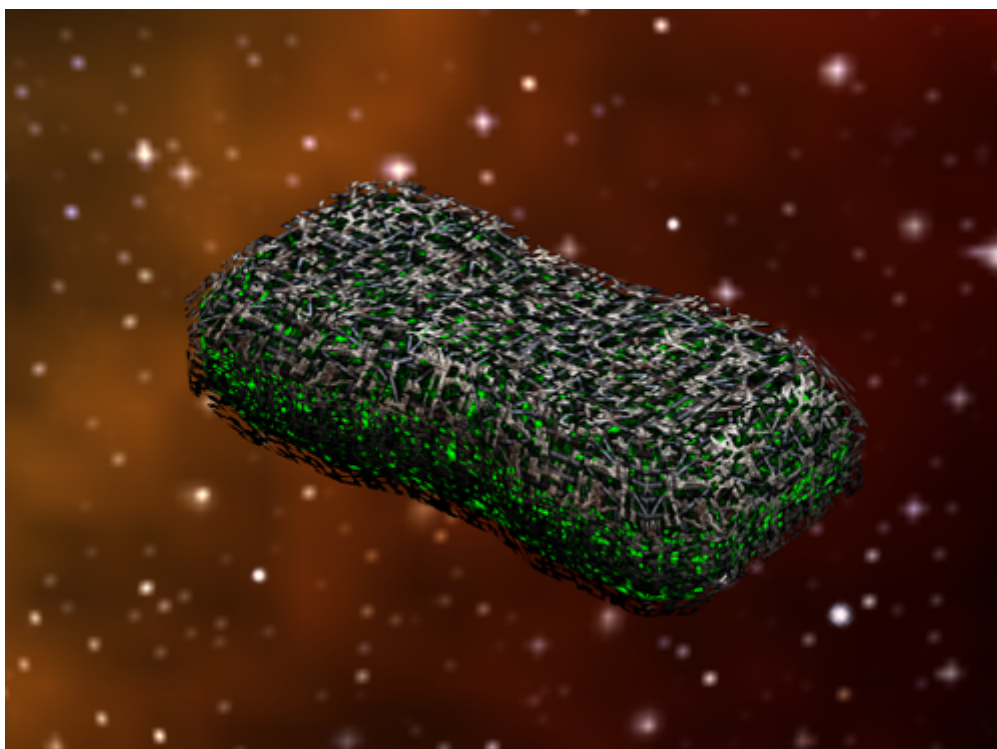


Armada 1 Interceptor

The *Interceptor* type ship of the game Star Trek Armada is the Borg's [destroyer](#). It is build by the [Assembly Matrix](#). Its special weapon is the [Transwarp Drive](#), which allows it to traverse vast distances in an instance. This allows it to do hit and run attacks with little danger to itself. As such it is the destroyer that takes the longest to be build (30 s) and is the most expensive one (250 dilithium/100 crew). The supply, however is the lowest drain (6/min). It's shield recharge rate as well as the shield strength itself are the highest amongst destroyers (1.4/s and 188). Same goes for the effective damage rate of 8/s. This makes it a powerful early game unit and specifically useful for [harassment](#) tactics.



Faction	Borg
Role	Destroyer
Build Time	30 s
Dilithium Cost	250 (8.3/s)
Supply Cost	3 (0.1/min)
Crew Cost	100 (3.3/s)
Shields	188
Shield Recharge Rate	1.4/s
Conventional Weapon Systems	Energy Beam X2
Effective Damage Rate	8/s
Max Special Weapon Energy	1000
Special Weapon Energy Recharge Rate	10/s
Special Abilities	Transwarp Drive
Speed	100
Scanning Range	500
Possesses Cloak	no

[[Star Trek: Armada](#)] [[Game Play](#)] [[Technical Support](#)]

[[Units](#)] [[Hero Ships](#)] [[Campaign Ships](#)] [[Ship Types](#)] [[Stations](#)] [[Station Types](#)] [[Special Weapons](#)] [[Factions](#)] [[Modding](#)]

[[Back to the Games Database](#)]

From:
<https://mwohlauer.d-n-s.name/wiki/> - mwohlauer.d-n-s.name / www.mobile-infanterie.de

Permanent link:
https://mwohlauer.d-n-s.name/wiki/doku.php?id=en:games:star_trek_armada_1:interceptor&rev=1648835844

Last update: **2022-04-01-17-57**

