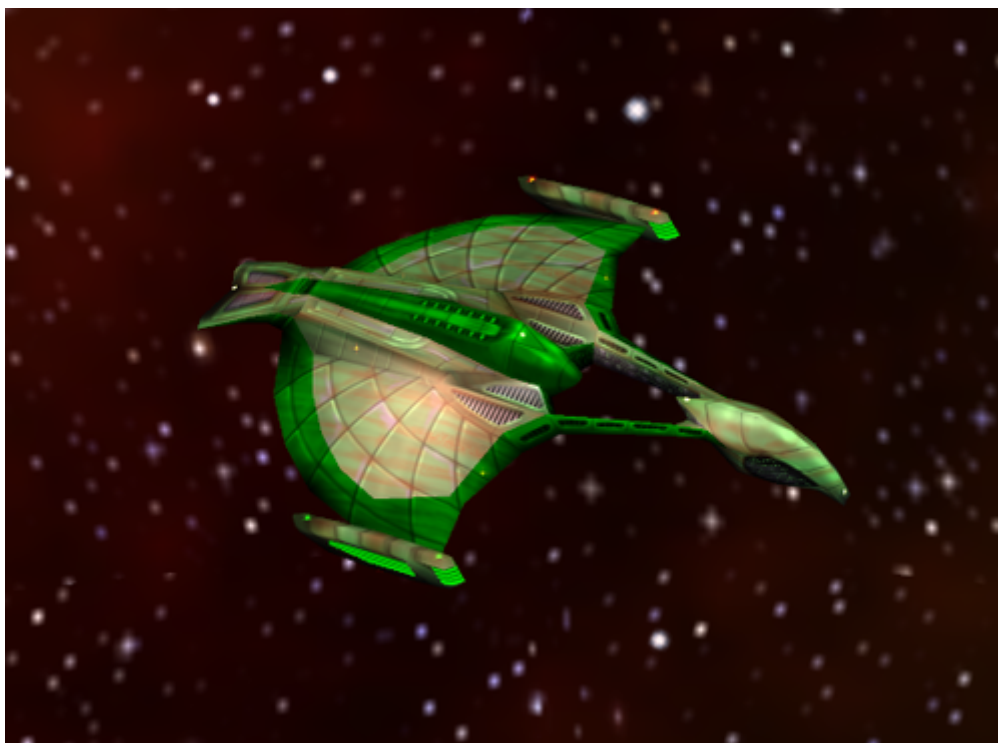


Armada 1 Griffin

The *Griffin* type ship of the game Star Trek Armada is the Romulan's [cruiser](#). It is build by the [Shipyard](#). It can be enhanced with a [Sensor Jammer](#), giving it the ability to blind opponents. The combination with its cloaking device allow it to quickly vanish from the battle field, supporting the sneaky hit and run attack play style of Romulans.



Faction	Romulans
Role	Cruiser
Build Time	40 s
Dilithium Cost	400 (10/s)
Supply Cost	5 (7.5/min)
Crew Cost	200 (5/s)
Shields	270
Shield Recharge Rate	1.35/s
Conventional Weapon Systems	Phaser Array X3
Effective Damage Rate	12/s
Max Special Weapon Energy	1000
Special Weapon Energy Recharge Rate	15/s
Special Abilities	Sensor Jammer
Speed	80
Scanning Range	500
Possesses Cloak	yes

[[Star Trek: Armada](#)] [[Game Play](#)] [[Technical Support](#)]

[[Units](#)] [[Hero Ships](#)] [[Campaign Ships](#)] [[Ship Types](#)] [[Stations](#)] [[Station Types](#)] [[Special](#)

[Weapons](#)] [[Factions](#)] [[Modding](#)]

[[Back to the Games Database](#)]

From:

<https://mwohlauer.d-n-s.name/wiki/> - **mwohlauer.d-n-s.name** / **www.mobile-infanterie.de**

Permanent link:

https://mwohlauer.d-n-s.name/wiki/doku.php?id=en:games:star_trek_armada_1:griffin

Last update: **2022-04-10-15-38**

