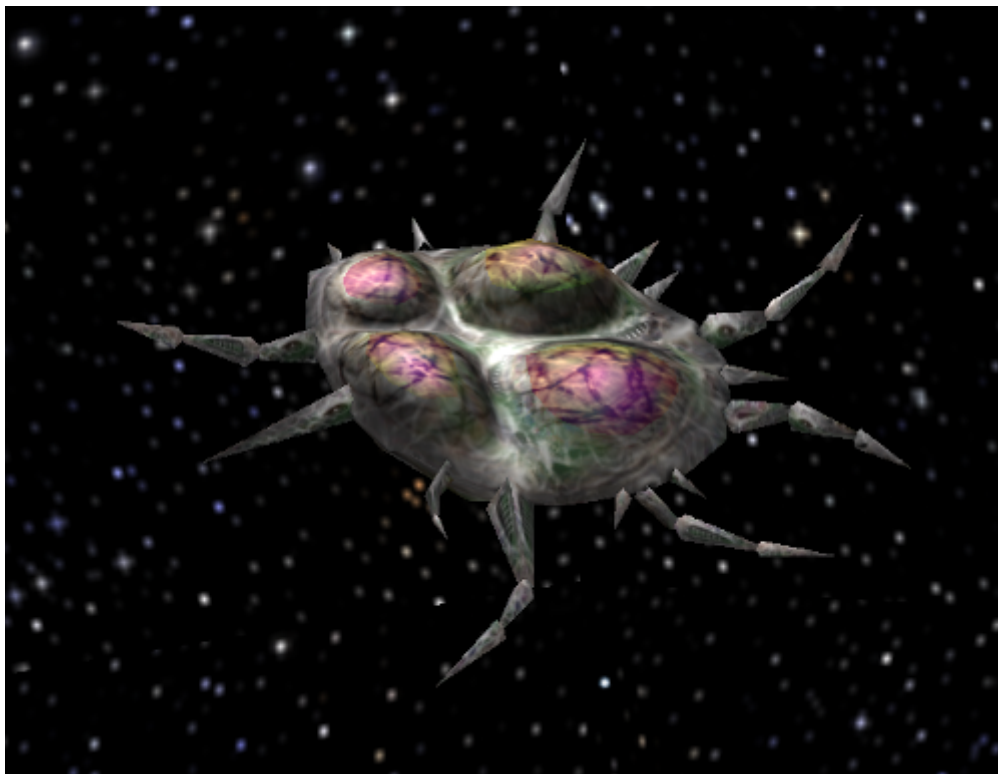


Armada 1 Entity

The *Entity* type ship of the game *Star Trek: Armada* is Species 9341s [Battleship](#). Its only weapon is a [Psychonic Blast](#), which allows it to drain an opponent's crew.



Faction	Species 9341
Role	Battleship
Build Time	5 s
Dilithium Cost	10 (2,0/s)
Supply Cost	0
Crew Cost	0
Shields	400
Shield Recharge Rate	2/s
Conventional Weapon Systems	-
Effective Damage Rate	0
Max Special Weapon Energy	500
Special Weapon Energy Recharge Rate	200/s
Special Abilities	Psychonic Blast
Speed	80
Scanning Range	500
Possesses Cloak	no

[[Star Trek: Armada](#)] [[Game Play](#)] [[Technical Support](#)]

[[Units](#)] [[Hero Ships](#)] [[Campaign Ships](#)] [[Ship Types](#)] [[Stations](#)] [[Station Types](#)] [[Special Weapons](#)] [[Factions](#)] [[Modding](#)]

[[Back to the Games Database](#)]

From:

<https://mwohlauer.d-n-s.name/wiki/> - **mwohlauer.d-n-s.name** / **www.mobile-infanterie.de**

Permanent link:

https://mwohlauer.d-n-s.name/wiki/doku.php?id=en:games:star_trek_armada_1:entity

Last update: **2022-04-17-15-35**

