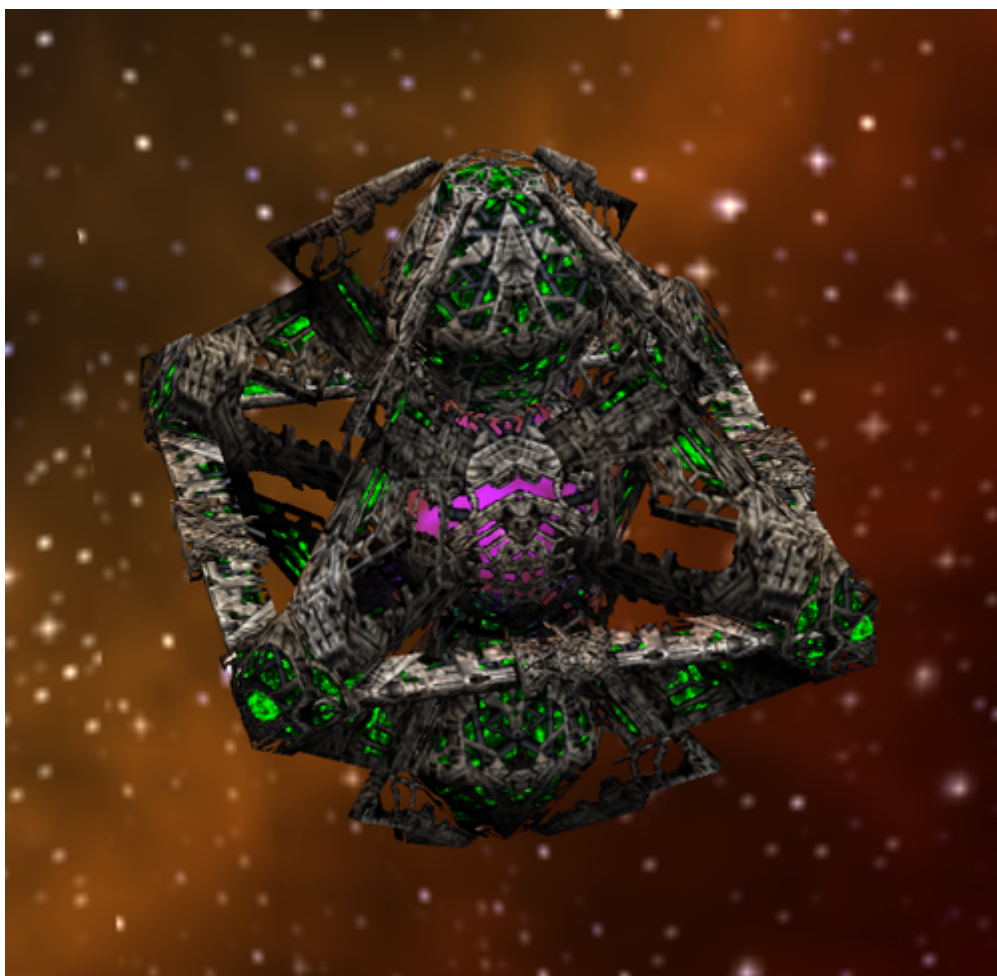


Armada 1 Diamond

The *Diamonds* type ship of the game Star Trek Armada is the Borg's [caster](#) ship, built by the [Adv. Assembly Matrix](#). As all of them, they are slow, do not deal a lot of conventional damage and the shield strength is low. The Diamond's specific danger are the [Ultritium Burst](#), which deals massive amounts of damage, as well as the [Computer Override](#) (taking temporarily control of an opponent's ship). In multiplayer the [Nanites](#) can be especially annoying, as this special weapon garbles the game's interface and blocks many keyboard commands. The [Shield Remodulation](#) can make any friendly ship impervious to most weapons, making it also an excellent support. This ship can be very deadly, so keep an eye on these.



Faction	Borg
Role	Caster
Build Time	140 s
Dilithium Cost	1400 (10/s)
Supply Cost	10 (4.3/min)
Crew Cost	350 (2.5/s)
Shields	300
Shield Recharge Rate	2.25/s
Conventional Weapon Systems	Energy Beam X1, Energy Torpedo Launcher X1
Effective Damage Rate	5.1 - 6/s
Max Special Weapon Energy	1000

Special Weapon Energy Recharge Rate	10/s
Special Abilities	Computer Override , Nanites , Shield Remodulation , Ultritium Burst
Speed	50
Scanning Range	500
Possesses Cloak	no

[[Star Trek: Armada](#)] [[Game Play](#)] [[Technical Support](#)]

[[Units](#)] [[Hero Ships](#)] [[Campaign Ships](#)] [[Ship Types](#)] [[Stations](#)] [[Station Types](#)] [[Special Weapons](#)] [[Factions](#)] [[Modding](#)]

[[Back to the Games Database](#)]

From:
<https://mwohlauer.d-n-s.name/wiki/> - mwohlauer.d-n-s.name / www.mobile-infanterie.de

Permanent link:
https://mwohlauer.d-n-s.name/wiki/doku.php?id=en:games:star_trek_armada_1:diamond&rev=1648835842

Last update: 2022-04-01-17-57

