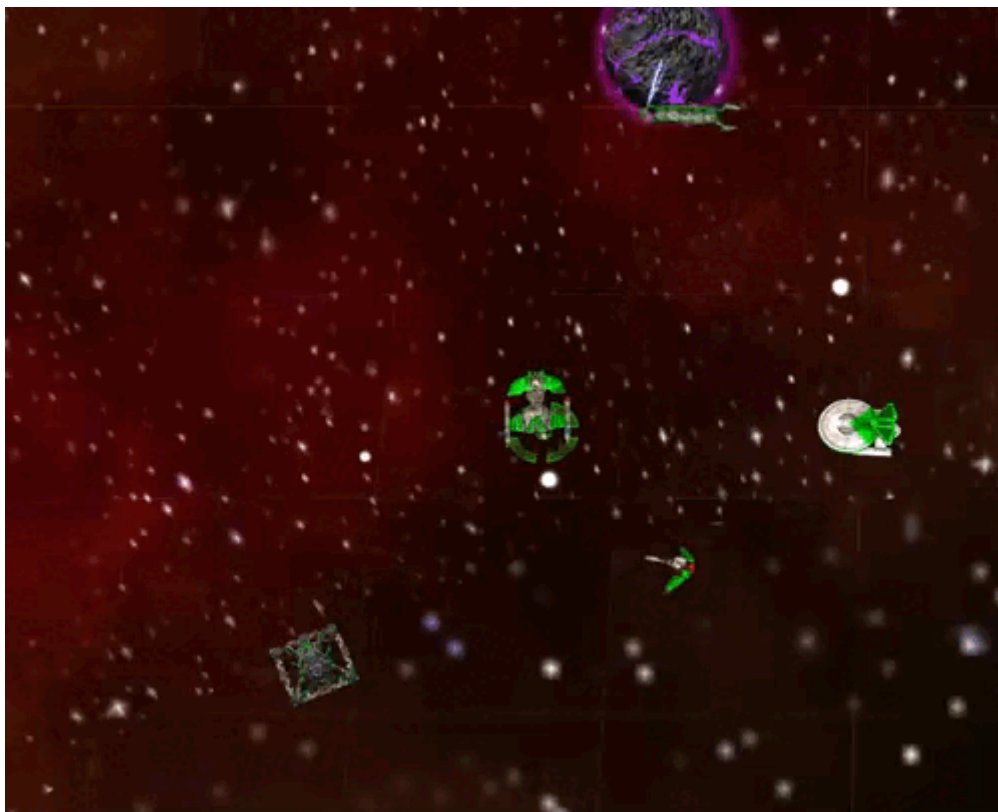


# Armada 1 Death Chant

The Death Chant special weapon of the game [Star Trek: Armada](#) increases battle efficiency of friendly ships in the vicinity of the casting ship. It is researched at the [Gre'thor Armory](#). It is depicted in this fashion:



Property	Value
<b>Range</b>	300
<b>Build Time</b>	140 s
<b>Supply Cost</b>	10 (4.3/min)
<b>Dilithium Cost</b>	650 (4.6/s)
<b>Special Energy Cost</b>	800
<b>Duration</b>	15 s

It affects all friendly ships and stations within its radius, having the following effects on them:

- Firing rate increased by 50% and
- repair rate is decreased by 50%.

The increased firing rate value affects the [Mining Beam](#), increasing the output rate by 50%. When having less than 3 [freighters](#) at a [Dilithium Moon](#), this may boost income rate. If you already have 3 or more freighters at one moon, there is little point in using this method, as the processing speed of [mining stations](#) is not increased, making them the bottle neck.

---

[ [Star Trek: Armada](#) ] [ [Game Play](#) ] [ [Technical Support](#) ]

[ [Units](#) ] [ [Hero Ships](#) ] [ [Campaign Ships](#) ] [ [Ship Types](#) ] [ [Stations](#) ] [ [Station Types](#) ] [ [Special Weapons](#) ] [ [Factions](#) ] [ [Modding](#) ]

---

[ [Back to the Games Database](#) ]

From:

<https://mwohlauer.d-n-s.name/wiki/> - **mwohlauer.d-n-s.name** / **www.mobile-infanterie.de**

Permanent link:

[https://mwohlauer.d-n-s.name/wiki/doku.php?id=en:games:star\\_trek\\_armada\\_1:death\\_chant](https://mwohlauer.d-n-s.name/wiki/doku.php?id=en:games:star_trek_armada_1:death_chant)

Last update: **2022-04-07-16-25**

