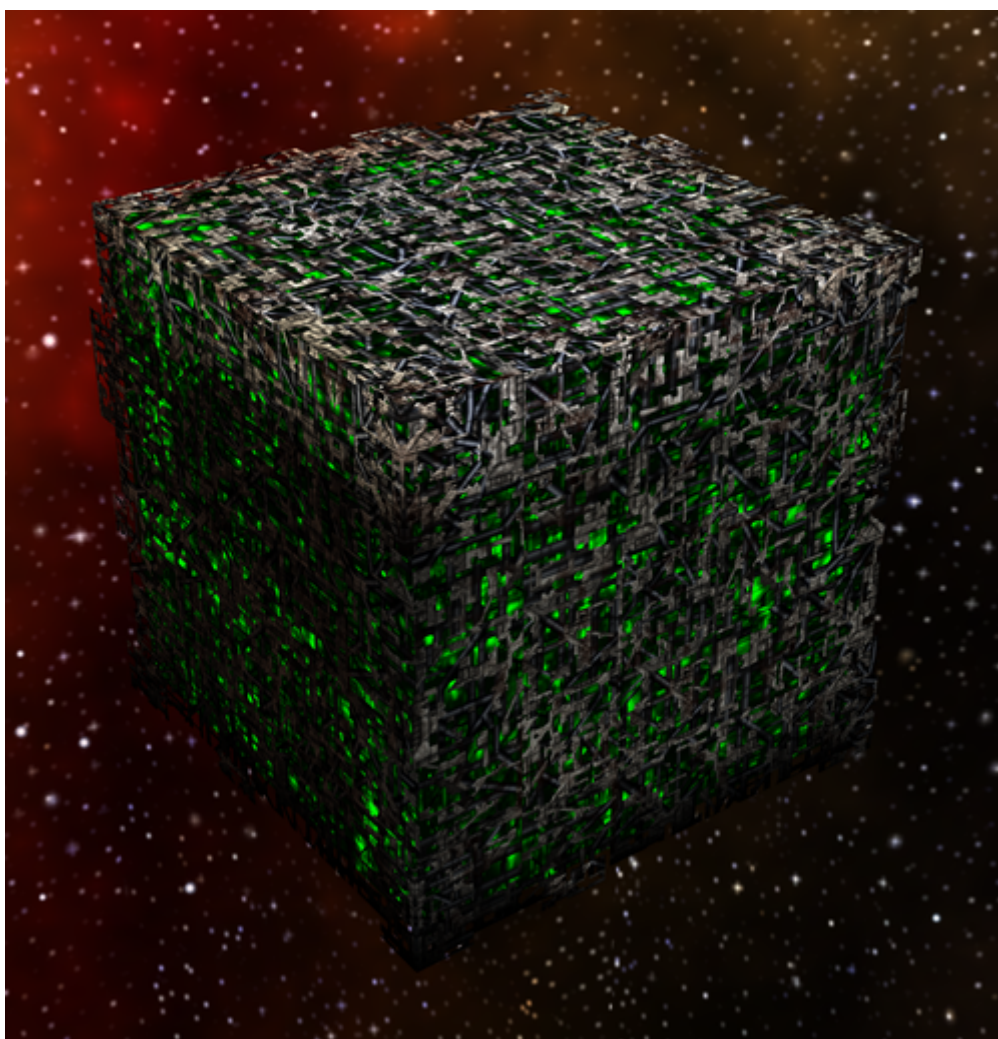


Armada 1 Cube

The *Cube* type ship of the game Star Trek Armada is the Borg's [battleship](#). It is build by the [Adv. Assembly Matrix](#). With a damage rate of up to 43.7 and a shield strength of 1125 it is the strongest unit with regards to conventional weapons. Its [Holding Beam](#) makes it even more dangerous, as the highest boarding party strength adds even more power to the beaming-in mechanics. For this it can also be considered to be an [assault ship](#). Romulans are specifically vulnerable against it. As the unit is at the same time the most expensive one (with all regards but especially the crew drain), a Borg player will need quite some time to produce units of this type and even then not as many as other Factions would allow for. This is on the other hand the best strategy against them: Use multiple units and beam crew over to ships targeted by the Holding Beam.



| | |
|------------------------------------|--|
| Faction | Borg |
| Role | Battleship/Assault |
| Build Time | 120 s |
| Dilithium Cost | 1200 (10/s) |
| Supply Cost | 7 (3.5/min) |
| Crew Cost | 1000 (8.3/s) |
| Shields | 1125 |
| Shield Recharge Rate | 8.4/s |
| Conventional Weapon Systems | Energy Beam X3, Energy Torpedo Launcher X3 |

| | |
|--|------------------------------|
| Effective Damage Rate | 34.7 - 43.7/s |
| Max Special Weapon Energy | 1000 |
| Special Weapon Energy Recharge Rate | 10/s |
| Special Abilities | Holding Beam |
| Speed | 80 |
| Scanning Range | 500 |
| Possesses Cloak | no |

[[Star Trek: Armada](#)] [[Game Play](#)] [[Technical Support](#)]

[[Units](#)] [[Hero Ships](#)] [[Campaign Ships](#)] [[Ship Types](#)] [[Stations](#)] [[Station Types](#)] [[Special Weapons](#)] [[Factions](#)] [[Modding](#)]

[[Back to the Games Database](#)]

From:

<https://mwohlauer.d-n-s.name/wiki/> - mwohlauer.d-n-s.name / www.mobile-infanterie.de

Permanent link:

https://mwohlauer.d-n-s.name/wiki/doku.php?id=en:games:star_trek_armada_1:cube&rev=1648845977

Last update: **2022-04-01-20-46**

