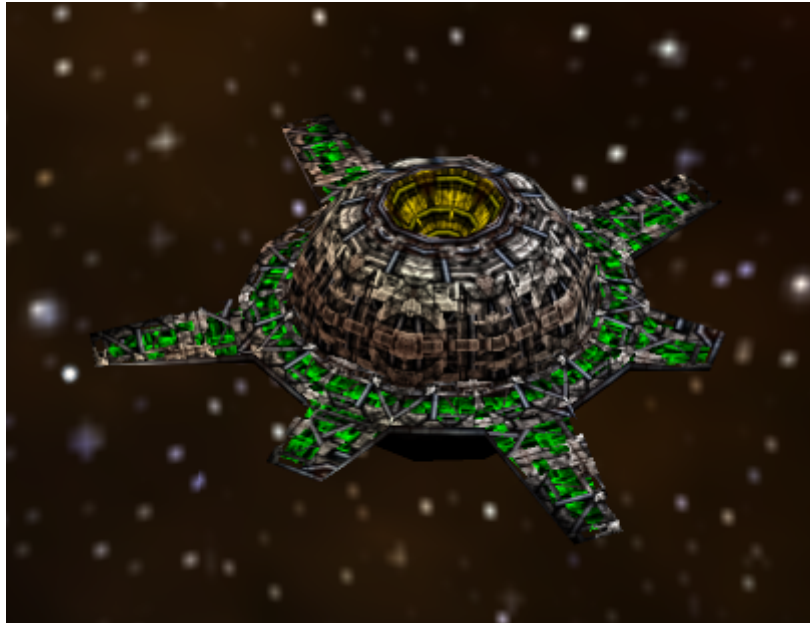


Armada 1 Borg Torpedo Turret

The Torpedo Turret is a powerful although expensive defense system. It is specifically vulnerable against the [Corbomite Reflector](#) of the [Sovereign](#) class.



Statistical Values

Faction	Borg
Dilithium Cost	450 (10/s)
Build Time	45 s
Crew Cost	0
Supply Cost	2 (2.7/min)
Shield Energy	1000
Shield Restoration Rate	0.8/s
Weapon System	Photon Torpedo
Effective Damage Rate	26.1 - 42.7/s
Scanning Range	700

[[Star Trek: Armada](#)] [[Game Play](#)] [[Technical Support](#)]

[[Units](#)] [[Hero Ships](#)] [[Campaign Ships](#)] [[Ship Types](#)] [[Stations](#)] [[Station Types](#)] [[Special Weapons](#)] [[Factions](#)] [[Modding](#)]

[[Back to the Games Database](#)]

From:

<https://mwohlauer.d-n-s.name/wiki/> - **mwohlauer.d-n-s.name** / **www.mobile-infanterie.de**

Permanent link:

https://mwohlauer.d-n-s.name/wiki/doku.php?id=en:games:star_trek_armada_1:borg_torpedo_turret

Last update: **2022-04-01-18-00**

