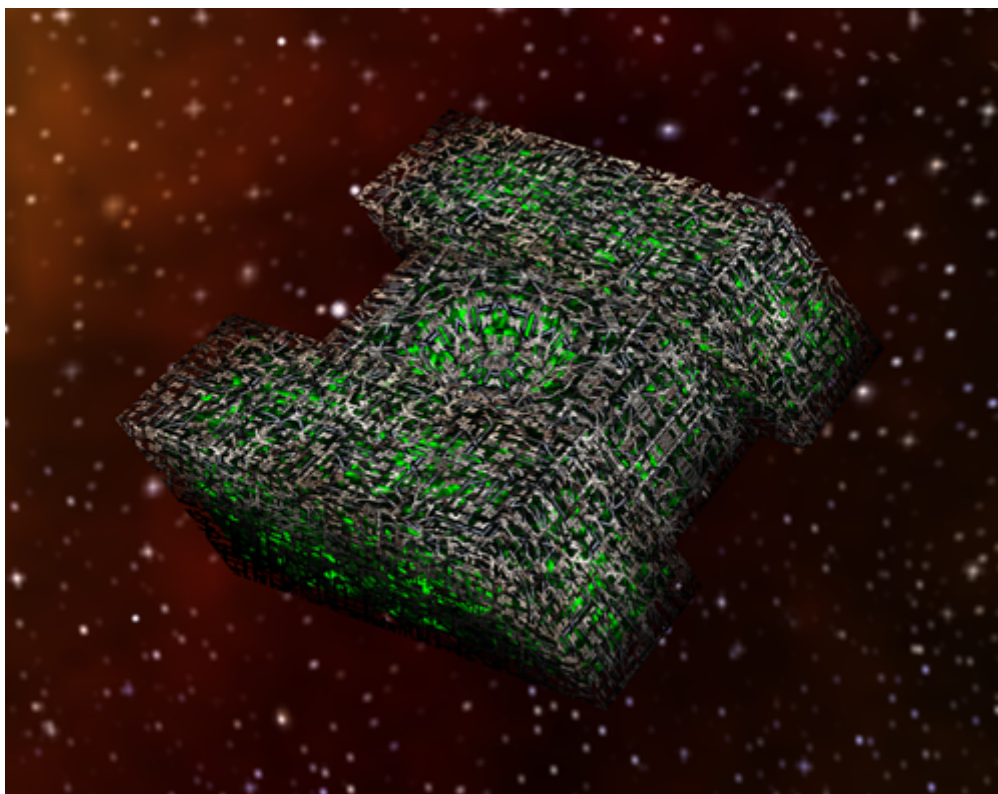


Armada 1 Assimilator

The *Assimilator* type ship of the game Star Trek Armada is the Borg's [heavy cruiser](#). It is build by the [Assembly Matrix](#). Its [Auto-Assimilator](#) is specifically designed, to gather crew. The damage rate of up to 15 puts it in the upper medium range of damage dealers. It is specifically vulnerable against [Sovereign class](#) ships.



Faction	Borg
Role	Cruiser
Build Time	50 s
Dilithium Cost	500 (10/s)
Supply Cost	5 (6/min)
Crew Cost	200 (4/s)
Shields	375
Shield Recharge Rate	2.8/s
Conventional Weapon Systems	Energy Torpedo Launcher X2
Effective Damage Rate	10.5 - 15/s
Max Special Weapon Energy	1000
Special Weapon Energy Recharge Rate	10/s
Special Abilities	Auto-Assimilator
Speed	80
Scanning Range	500
Possesses Cloak	no

[[Star Trek: Armada](#)] [[Game Play](#)] [[Technical Support](#)]

[[Units](#)] [[Hero Ships](#)] [[Campaign Ships](#)] [[Ship Types](#)] [[Stations](#)] [[Station Types](#)] [[Special Weapons](#)] [[Factions](#)] [[Modding](#)]

[[Back to the Games Database](#)]

From:

<https://mwohlauer.d-n-s.name/wiki/> - **mwohlauer.d-n-s.name** / **www.mobile-infanterie.de**

Permanent link:

https://mwohlauer.d-n-s.name/wiki/doku.php?id=en:games:star_trek_armada_1:assimilator

Last update: **2022-04-10-15-35**

