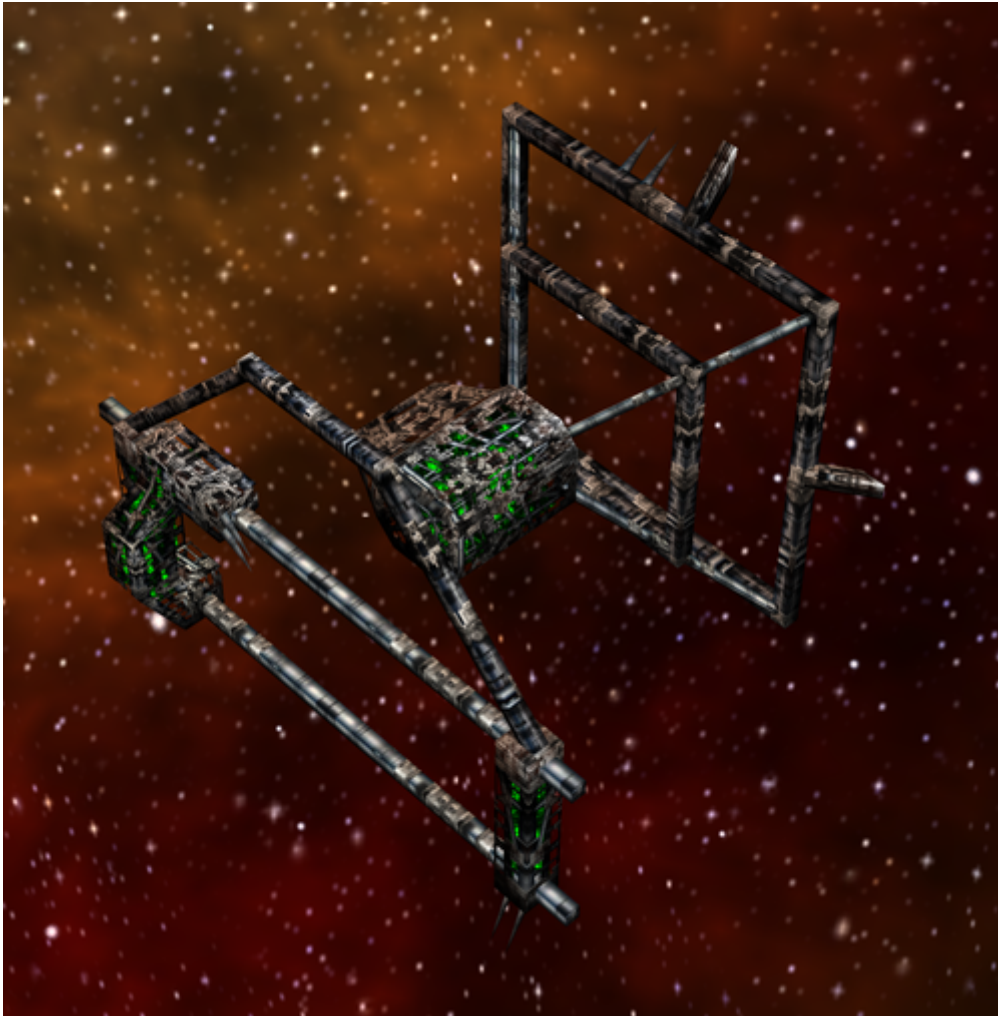


Armada 1 Assembly Matrix

The Assembly Matrix produces the [Borg](#) tier 1 units, the [Detector](#), [Interceptor](#), [Sphere](#) and [Assimilator](#).



Statistical Values

| | |
|--------------------------------|----------------------|
| Faction | Borg |
| Dilithium Cost | 1200 (20/s) |
| Build Time | 60 s |
| Crew Cost | 500 (8.3/s) |
| Supply Cost | 5 (5/min) |
| Shield Energy | 2000 |
| Shield Restoration Rate | 1.7/s |
| Weapon System | none |
| Effective Damage Rate | 0 |
| Scanning Range | 700 |
| Special Weapon | none |

Resource Drain When Used

| Ship | Icon | Dilithium | Supply | Crew |
|-------------|---|-----------|--------|-------|
| Detector |  | 8/s | 8/min | 2/s |
| Interceptor |  | 8.3/s | 6/min | 3.3/s |
| Sphere |  | 10/s | 6/min | 5/s |
| Assimilator |  | 10/s | 6/min | 4/s |

[[Star Trek: Armada](#)] [[Game Play](#)] [[Technical Support](#)]

[[Units](#)] [[Hero Ships](#)] [[Campaign Ships](#)] [[Ship Types](#)] [[Stations](#)] [[Station Types](#)] [[Special Weapons](#)] [[Factions](#)] [[Modding](#)]

[[Back to the Games Database](#)]

From: <https://mwohlauer.d-n-s.name/wiki/> - mwohlauer.d-n-s.name / www.mobile-infanterie.de

Permanent link: https://mwohlauer.d-n-s.name/wiki/doku.php?id=en:games:star_trek_armada_1:assembly_matrix

Last update: **2022-04-01-17-57**

