

# HLSW

## Infos

HLSW is a program that allows you to join a server with practically a single click, without having to open the game. The program will start the game that matches the server (if you have set HLSW to find it on your hard drive) and makes it connect to the server directly. You can also set other things for the server, such as that it should also start Cheating Death when [Counter-Strike](#) is started, or something similar. If you're clever enough to bind exit to some button in the game, you don't have to

do much to change the game or the server. 😊

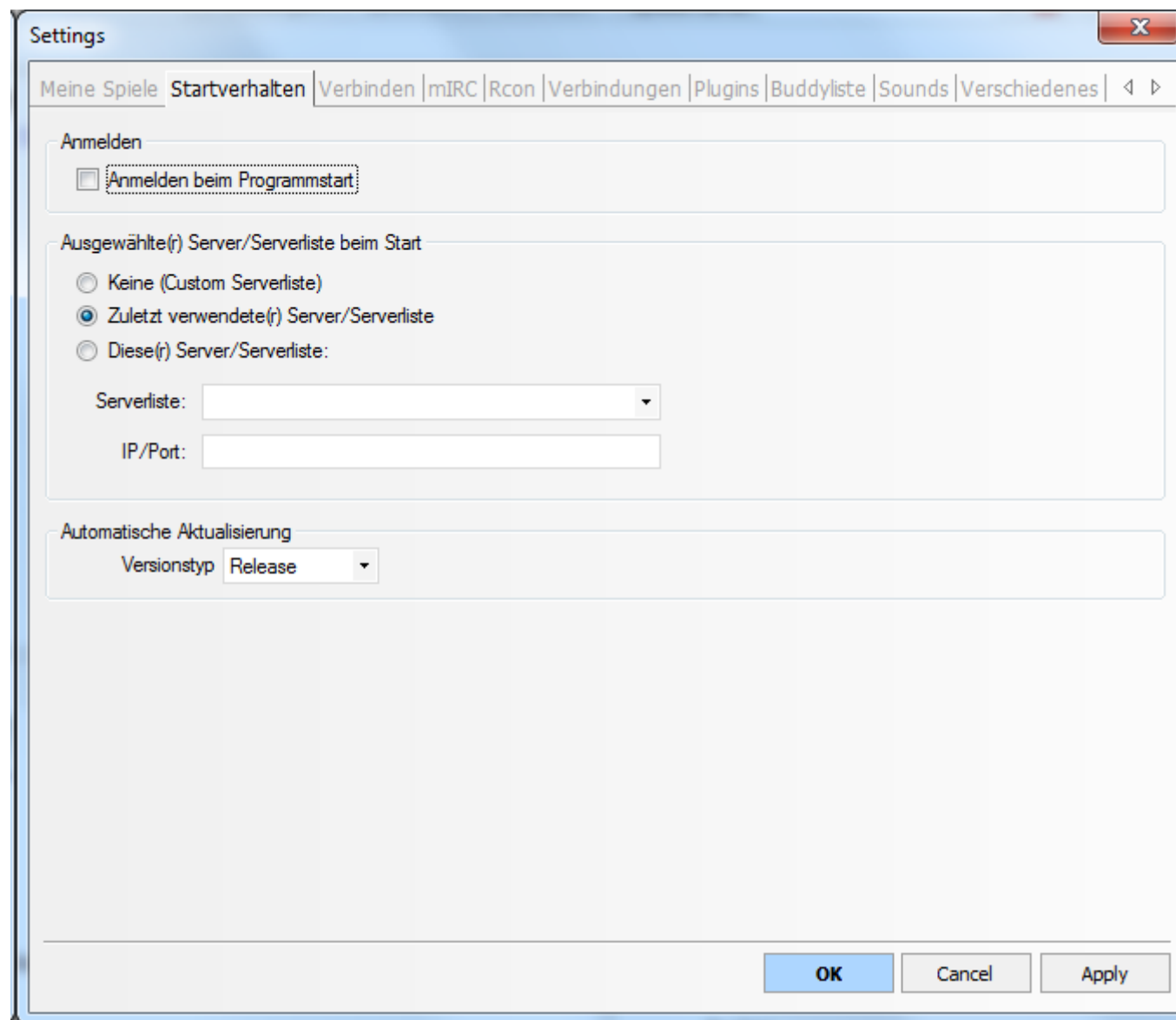
## Set Up

The program is available from [here](#). If you don't like the login window at the beginning, you can also turn it off by unchecking the box Automatic login at startup in the start window:



And then:

1. via Menu **Settings**
2. **Settings**
3. **Startup**
4. Remove the checkbox of **Login at Program Start**:



## Alternatives

The Linux alternative is called XQF and should be available via package management. However, the program is not half as extensive as HLSW, especially when it comes to supported games.

[Back to the games database](#)

From:

<https://mwohlauer.d-n-s.name/wiki/> - **mwohlauer.d-n-s.name** / **www.mobile-infanterie.de**

Permanent link:

[https://mwohlauer.d-n-s.name/wiki/doku.php?id=en:game\\_tech:hslw](https://mwohlauer.d-n-s.name/wiki/doku.php?id=en:game_tech:hslw)

Last update: **2022-04-02-09-49**

